



MAERSK GIANT



MÆRSK GIANT

TYPE

Hitachi Zosen, Ultra harsh environment jack-up drilling rig

BUILT

Hitachi, 1986

CLASS

Det norske Veritas

FLAG

Denmark

The **MÆRSK GIANT** is one of the ultra harsh environment jack-ups in Maersk Drilling's fleet. The rig is fully equipped for high pressure/high temperature (HP/HT) drilling and is designed for year-round operation in the North Sea, in water depths up to 107 m (350 ft) with an available leg length below hull of 132 m (435 ft).

The main features of the MÆRSK GIANT include:

- Fully equipped for HP/HT operations
- 15,000 psi BOP system - 18¾"
- Fully integrated pipe transfer and handling system
- 16.8 m (55 ft) cantilever extension capability
- Mechanised operation on drill floor



MAIN PARTICULARS

| DIMENSIONS | IMPERIAL | METRIC |
|---|----------------|---------------|
| Length overall | 277 ft | 84 m |
| Width overall | 295 ft | 90 m |
| Depth | 31 ft | 9.4 m |
| Length of legs | 525 ft | 160 m |
| Cantilever - max. reach: aft of stern to each side of centerline | 55 ft 13 ft | 16.8 m 4 m |
| Draught | 15.7 ft | 4.8 m |

| WEATHER/DESIGN CRITERIA | IMPERIAL | METRIC |
|-------------------------|-----------|-----------|
| Water depth | 350 ft | 107 m |
| Wind speed | 87 knots | 45 m/sec |
| Penetration | 16.4 ft | 5 m |
| Wave height | 98.4 ft | 30 m |
| Current (surface) | 1.5 knots | 0.8 m/sec |
| Air gap | 68.8 ft | 21 m |

| PARTICULARS | IMPERIAL | METRIC |
|---------------------------------|------------------------|----------------------|
| Rated drilling depth | 25,000 ft | 7,620 m |
| Hook load static w/top drive | 1,000,000 lb | 453,600 kg |
| Rotary load | 1,100,000 lb | 498,960 kg |
| Setback load | 400,000 lb | 180,000 kg |
| Variable load (incl. hook load) | 5,000 t | 5,000 t |
| Derrick | 160 ft x 30 ft x 30 ft | 49 m x 9.1 m x 9.1 m |
| Jacking speed | 1.5 ft/min | 0.46 m/min |
| Drill water | 26,500 bbl | 4,213 m ³ |
| Fuel oil | 4,335 bbl | 690 m ³ |
| Nontoxic oil | 1,849 bbl | 294 m ³ |
| Brine | 1,448 bbl | 230 m ³ |
| Potable water | 2,734 bbl | 435 m ³ |
| Liquid mud | 2,900 bbl | 468 m ³ |
| Bulk cement | 5,400 ft ³ | 153 m ³ |
| Bulk mud | 8,100 ft ³ | 230 m ³ |
| Accommodation | 100 persons | 100 persons |



DRAWWORKS

National 1320-UE 2,000 hp driven by two GE 752 DC motors with disk brake system.

TRAVELLING EQUIPMENT

National 583 t crown block with 6 x 60" sheaves and one 78" sheave grooved for 1½" wireline. One 84" sheave for fast line. National 660G 500 t travelling block and hook, 6 x 60" sheaves grooved for 1½" wireline.

TOP DRIVE AND PIPE HANDLING

Varco TDS-4S top drive system with PH85 pipe handler, complete with a GE 752 DC motor, 1,100 hp, max. 250 rpm. Capacity 454 t.

Varco PRS 8i pipe racking machine. Range 2⅞" - 9¾". Max. lift 10 t.

Varco pipe pick-up/lay-down machine (PTS 3). Range 2⅞" - 20" consisting of pipe deck machine, pipe conveyor and pipe transfer machine.

Varco fully interlocked zone management system (ZMS).

ROTARY TABLE

National C-495, 49½" rotary table with hydraulic drive. Note: Hydraulic motor not for drilling.

MUD PUMPS

Three National 12-P-160, triplex pumps, each driven by two GE 752 DC motors. Rating 1,600 hp, max. liner size 7¼", stroke length 12" speed 120 spm. Rated for 5,000 psi.

CEMENTING EQUIPMENT

Halliburton HCD25, 25 bbl cementing unit. On free placement agreement.

WELL CONTROL EQUIPMENT

NL Shaffer 18¾" - 15,000 psi consisting of one 10,000 psi annular preventer, one 15,000 psi double ram preventer and one 15,000 psi single ram preventer.

Vetco Gray diverter system type KFDJ 500 psi.

MUD RETURN SYSTEM

Four M-I Swaco balanced elliptical motion BEM-650 shakers. Wellco 5200 vacuum degasser. Mud gas separator with 10" gas vent outlet 49 m (160 ft) above the drill floor and 20' dip tube.

DRIVE PIPE SUPPORT DECK

Texas deck for conductor support 4.6 m (15 ft) aft of transom. For size 30" - to be retrieved after each job. Skidable in transverse direction with 65 tons load. The deck supports wildcat operations in the full drilling envelope.

TENSIONER SYSTEM

Four hydraulic cylinders each with 100 t capacity capable of providing tension in the conductor in all positions inside the cantilever well pattern. Complete with accumulator bank providing continuous tension.

DRILLING INSTRUMENTATION

Varco rig sense system with multi-parameter and alarm settings.

POWER SUPPLY

Five Caterpillar 3516 DITA air-start diesel driven engines, 1,231 kW, each driving one GE GTA 30 1,560 kVA AC generator, 1,200 rpm, 600 V and 60 Hz. One Caterpillar 3508 DITA diesel engine with one 480 kW AC emergency generator.

SCR SYSTEM

Hill Graham SCR system with two dual DC drive units and three single DC drive units with Sace Megamax main breaker protection.

CRANES

One National OS 435, 43 m (140 ft) boom, 49.5 t max capacity.

One Nov Molde OC 2500LD, 40 m (130 ft) boom, max capacity 45 t.

One Nov Molde OCLD 3000, 51 m (165 ft) boom, max capacity 65 t.

HELICOPTER DECK

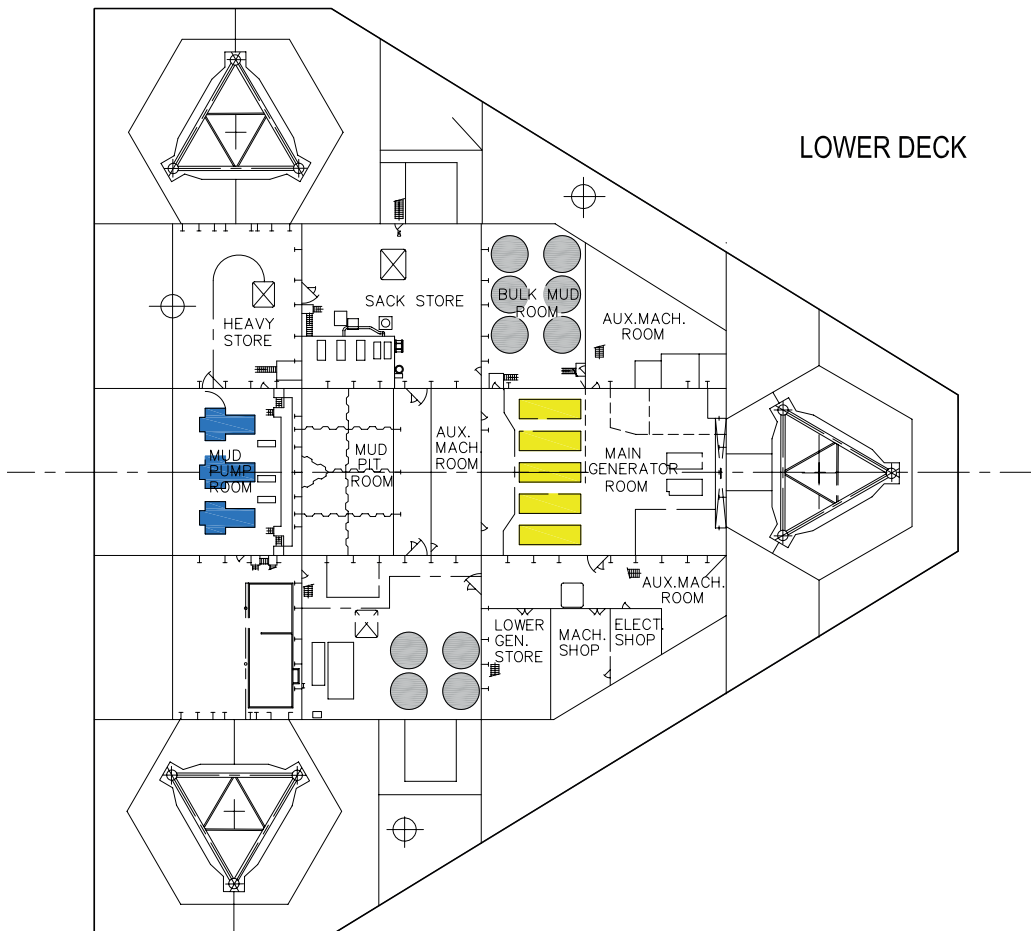
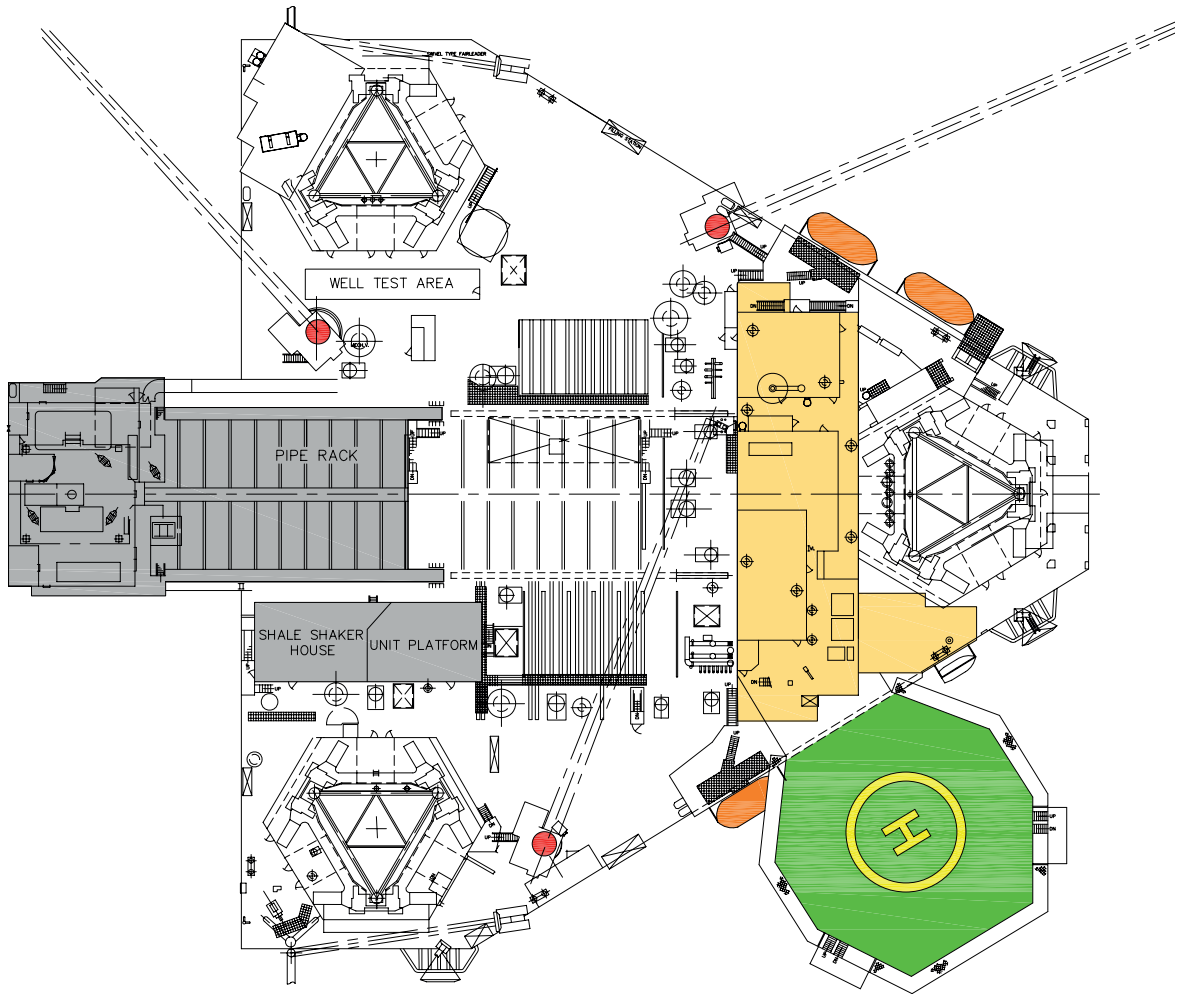
25 m (83 ft) diameter helicopter deck suitable for Sikorsky S-61N helicopter.

SAFETY EQUIPMENT

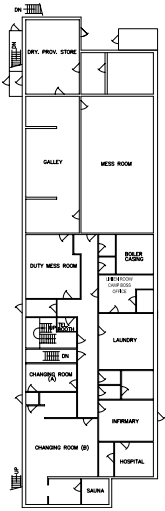
Lifesaving and fire fighting equipment in accordance with Danish Maritime Authority, U.K. DOE/DOT and Norwegian regulations, draft of IMO MODU code 1989. The rig holds a vessel specific safety case which has been approved by HSE UK.

ACCOMMODATION

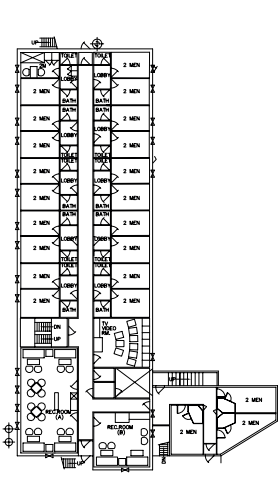
100 persons in eight one-man rooms and 46 two-man rooms with full facilities. Six offices and three recreation rooms.



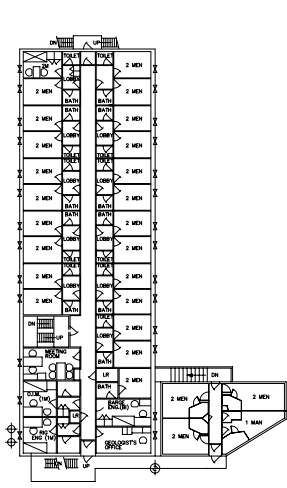
MAIN DECK



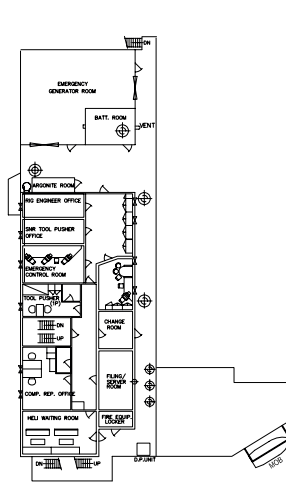
A-DECK



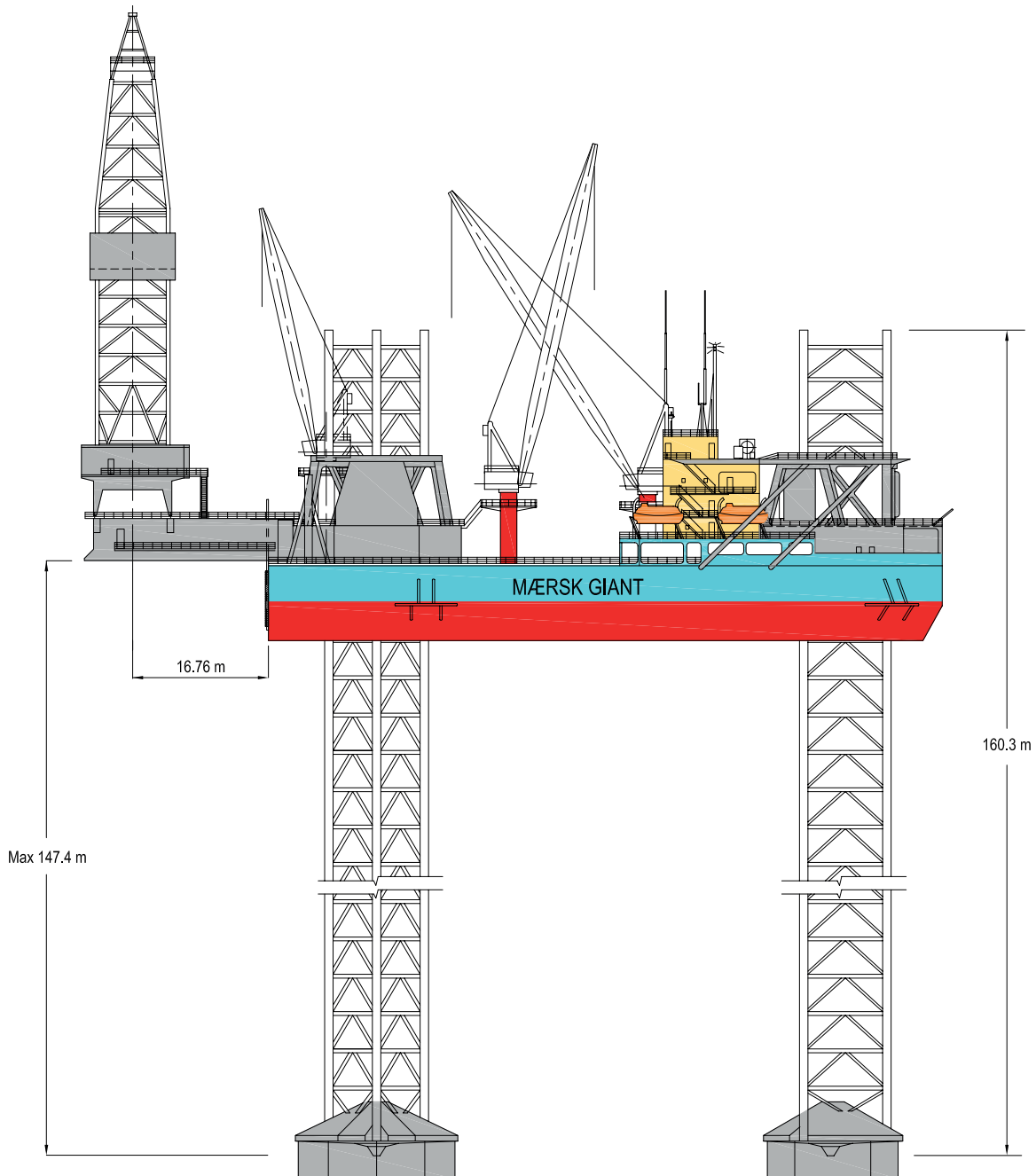
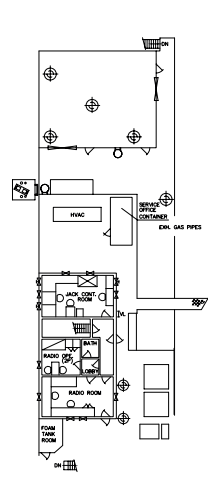
B-DECK



C-DECK



D-DECK



Head office:

Maersk Drilling

50, Esplanaden
1098 Copenhagen K
Denmark

Telephone: +45 3363 3363

Telefax: +45 3363 3182

E-mail: copenhagen@maersk-
drilling.com

www.maersk-drilling.com



June 2009

Maersk Drilling, Esbjerg

1, Kanalen
P.O. Box 239
6701 Esbjerg
Denmark

Telephone: +45 76 14 77 00

Telefax: +45 76 14 77 32

E-mail: esbjerg@maersk-
drilling.com

Maersk Drilling, Baku

9th Floor ISR Plaza Business Center
340 Nizami Street
Baku 370000
Azerbaijan

Telephone: +994 12 4978450

Telefax: +994 12 4978467

E-mail: baku@maersk-
drilling.com

Maersk Drilling (UAE) FZE

LB18, 26th floor, Jebel Ali Free Zone
P.O. Box 262476
Dubai

United Arab Emirates

Telephone: +971 4 8865 770

Telefax: +971 4 886 5679

E-mail: dubai@maersk-
drilling.com

The Maersk Company Ltd.

Maersk Drilling

Maersk House
Crawpeel Road
Altens Industrial Estate
Aberdeen AB12 3LG
United Kingdom

Telephone: +44 1224 243100

Telefax: +44 1224 243213

E-mail: aberdeen@maersk-
drilling.com

Maersk Drilling, Venezuela

Edificio MCVSA
Muelle Terminales Maracaibo
Las Morochas
Estado Zulia
Venezuela

Telephone: +58 265 6 401500

Telefax: +58 265 6 410583

E-mail: venezuela@maersk-
drilling.com

Maersk Drilling USA Inc.

2500 City West Boulevard
Suite 1850
Houston
Texas 77042
USA

Telephone: +1 713 346 4300

Telefax: +1 713 783 9409

E-mail: houston@maersk-
drilling.com

Maersk Drilling Norge AS

Christian August Thorings veg 9
P.O. Box 134 Forus
4065 Stavanger
Norway

Telephone: +47 52 01 70 00

Telefax: +47 52 01 70 01

E-mail: norway@maersk-
drilling.com

Maersk Drilling Australia Pty Ltd

Level 1, 1 Preston Street
Como, WA 6152
Australia

Telephone: +61 8 6436 1400

Telefax: +61 8 6436 1444

E-mail: perth@maersk-
drilling.com

Maersk Drilling Services A/S, Brunei

Brunei Branch Lot 7272
Simpang 73, Sungai Duhon
Light Industrial Area
Kuala Belait KA3131

Negara Brunei Darussalam

Telephone: +673 223 9955

Telefax: +673 223 9958

E-mail: brunei@maersk-
drilling.com