



MÆRSK GALLANT



MÆRSK GALLANT

TYPE

MSC CJ62-120S, Ultra harsh environment jack-up drilling rig

BUILT

Far East Levingston Shipbuilding (FELS), 1993

CLASS

Lloyd's Register of Shipping

FLAG

Denmark

The **MÆRSK GALLANT** is one of the ultra harsh environment jack-ups in Maersk Drilling's fleet.

The rig is designed for year-round operation in the North Sea, in water depths up to 120 m (394 ft) with an available leg length below hull of 148.5 m (487 ft). The water depth capability can be increased to 125 m (410 ft) through installation of spudcan extensions. The rig is fully equipped for high pressure/high temperature drilling (HP/HT).

The **MÆRSK GALLANT** has been working in the North Sea since its commissioning in 1993.

The main features of the **MÆRSK GALLANT** include:

- 120–125 m water depth year-round in the North Sea
- Fully equipped for HP/HT operations
- 63 ft cantilever reach
- Skid-off feature
- 5,000 bbl dual mud system with dedicated oilbase storage tanks
- Driller's cabin, fully enclosed, touchscreen and joystick controls
- Computerised drilling systems
- 18 ¾" 15,000 psi BOP system
- Automated pipe handling system
- Automated and dust-free chemical mixing system
- Unmanned engine room
- Cuttings slurryfication and reinjection system

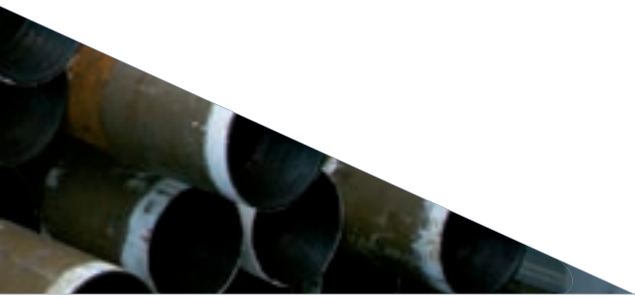


MAIN PARTICULARS

DIMENSIONS	IMPERIAL	METRIC
Length overall	257 ft	78.2 m
Width overall	296 ft	90.3 m
Depth	35.5 ft	10.8 m
Length of legs	575 ft	175.2 m
Cantilever - max. reach: aft of stern to each side of centerline	63 ft 15 ft	19.5 m 4.57 m
Draught	19.4 ft	5.9 m

WEATHER/DESIGN CRITERIA	IMPERIAL	METRIC
Water depth	394 ft	120 m
Wind speed	87 knots	45 m/sec
Penetration	16.4 ft	5 m
Wave height	98.4 ft	30 m
Current (surface)	1.9 knots	1 m/sec
Air gap	68.8 ft	21 m

PARTICULARS	IMPERIAL	METRIC
Rated drilling depth	25,000 ft	7,620 m
Hook load static w/top drive	1,650,000 lb	750,000 kg
Rotary load	1,650,000 lb	750,000 kg
Setback load	850,000 lb	385,560 kg
Variable load (incl. hook load)	5,000 t	5,000 t
Derrick, beam leg type	160 ft x 40 ft x 40 ft	48.8 m x 12.2 m x 12.2 m
Jacking speed	1.15 ft/min	0.35 m/min
Drill water	14,045 bbl	2,233 m ³
Fuel oil	4,240 bbl	676 m ³
Nontoxic oil	1,700 bbl	270 m ³
Brine	1,700 bbl	270 m ³
Potable water	1,880 bbl	300 m ³
Liquid mud	5,035 bbl	800 m ³
Bulk cement	5,600 ft ³	160 m ³
Bulk mud	9,100 ft ³	260 m ³
Slurryfication tank	1,880 bbl	300 m ³
Accommodation	100 persons	100 persons



DRAWWORKS

Continental Emsco C-3 Type II, 3,000 hp.

TRAVELLING EQUIPMENT

Continental Emsco RA 60-7-750 travelling block, 680 MT capacity.

TOP DRIVE AND PIPE HANDLING

Varco TDS-6S with pipe handler and block retract system.
Varco PHM-3 pipe racking system with automatic fingerboards.
Varco AR3200 integrated iron roughneck.
Varco fully interlocked zone management system (ZMS).

ROTARY TABLE

Continental Emsco T4950-65 driven by Rexroth Mr-3600 hydraulic motor. Opening 49 1/2".

MUD PUMPS

Three Continental Emsco FC-2200, 2,200 hp, rated for 7,500 psi.

CEMENTING EQUIPMENT

Halliburton HCS-25D 15,000 psi wp. On free placement agreement.

WELL CONTROL EQUIPMENT

NL Shaffer 18 3/4" 15,000 psi NXT BOP consisting of one annular + one double ram preventer + one single ram preventer.
Vetco Gray diverter system type KFDJ 500 psi.

MUD RETURN SYSTEM

Four Rigtech VSM 300 shale shakers, high performance linear motion. Swaco Geolograph degasser horizontal type. Two Swaco centrifuges and one Smedvig IPR cascade desilter. The rig is equipped with an Expro ultrasound slurryfication unit, a holding tank and an Expro injection pump. The pump is an electrical driven triplex pump with its own power supply.

DRIVE PIPE SUPPORT DECK

Hinged deck for conductor support 50 ft aft of transom. For sizes 30" to 36".

TENSIONER SYSTEM

Conductor tensioning system consisting of 4 x 60 t hydraulic cylinders.

BOP handling system consisting of 4 x 45 t air-powered chain type trolley cranes.

DRILLING INSTRUMENTATION

HITEC/ABB 1000 drilling instrumentation with multi-parameter and alarm settings.

POWER SUPPLY

Five Caterpillar 3516 DITA air-start diesel driven engines. Continuous output 1,545 hp at 1,200 RPM, maximum output 1,615 hp. Each diesel engine driving one LeRoy Somer LSA 52L9/6P. Output 1,260 kW, 1,800 KVA, 600 volts, 60 Hz.

SCR SYSTEM

ABB SCR system.

CRANES

Two Liebherr BOS 50/1100 cranes, 42.7 m (140 ft) 50 t capacity and whip 1 x 8 t and 1 x 11 t.

One Liebherr BOS 34/930 crane, 42.7 m (140 ft) 34 t capacity and whip 5 t.

HELICOPTER DECK

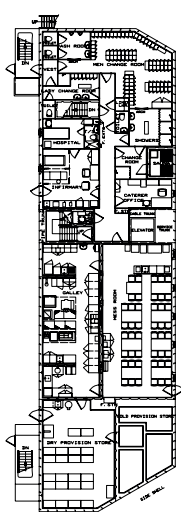
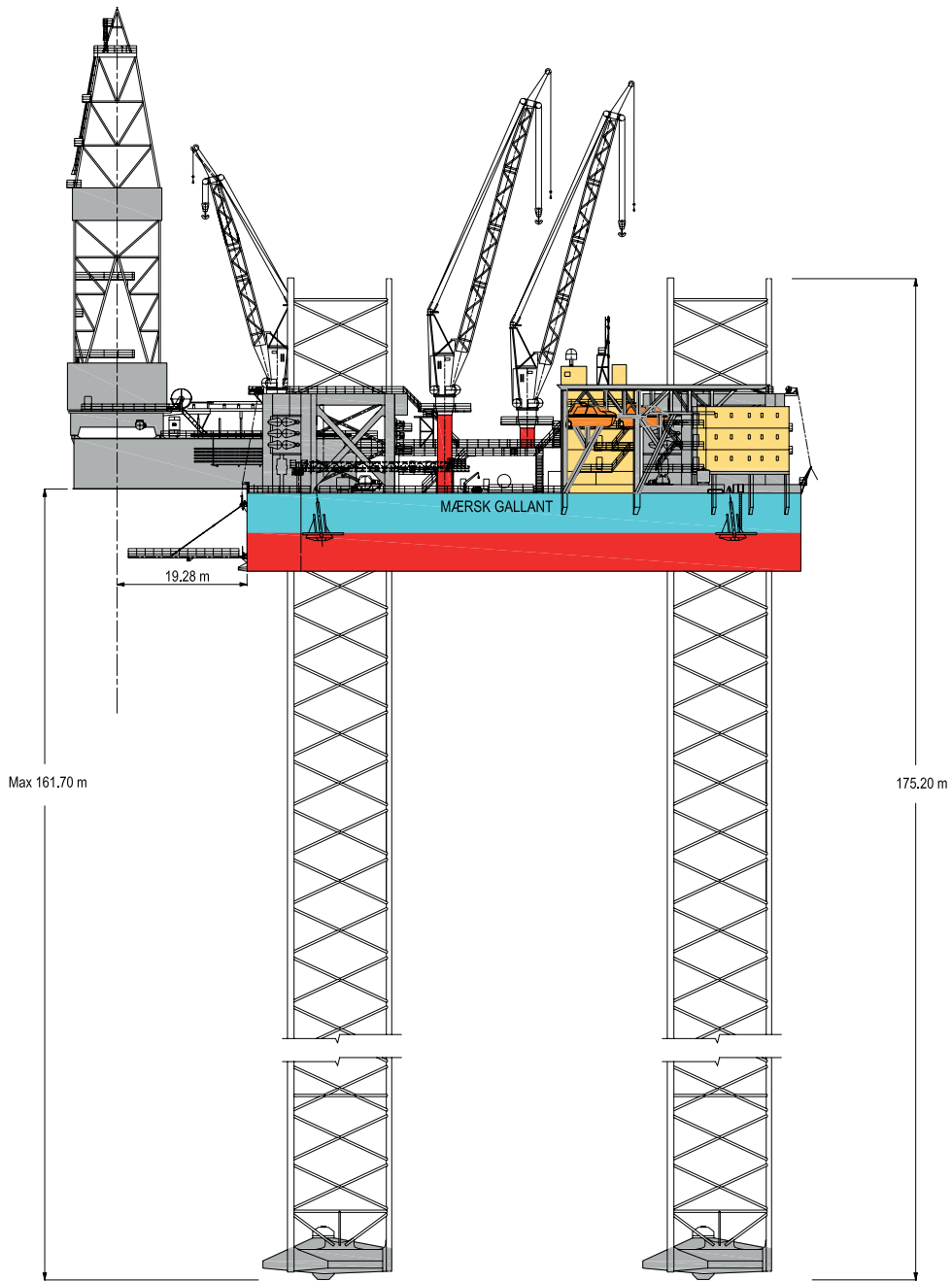
22.5 m (74 ft) diameter helicopter deck suitable for Sikorsky S-61N helicopter.

SAFETY EQUIPMENT

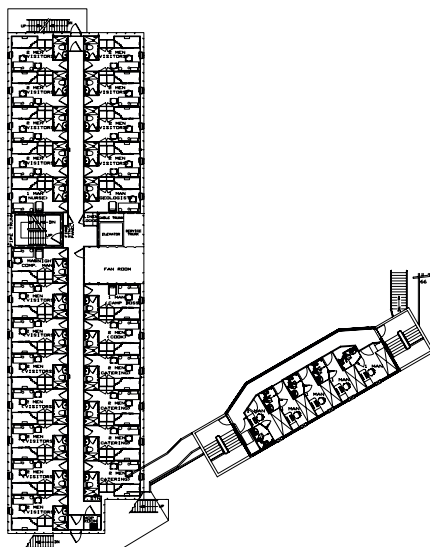
Lifesaving and fire fighting equipment in accordance with Danish Maritime Authority, U.K. DOE/DOT and Norwegian regulations, draft of IMO MODU code 1989. The rig holds a vessel specific safety case which has been approved by HSE UK.

ACCOMMODATION

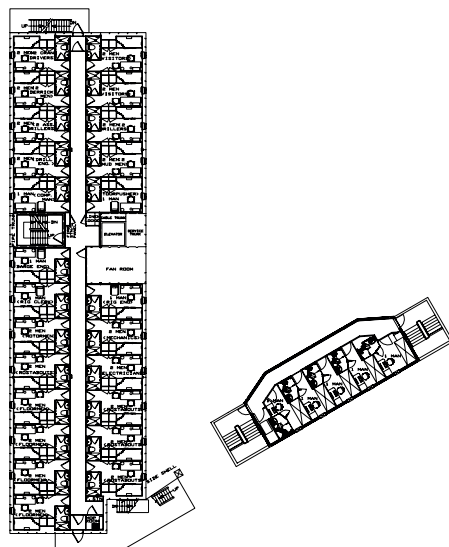
100 persons in two-man rooms with full facilities. ■



MAIN DECK.

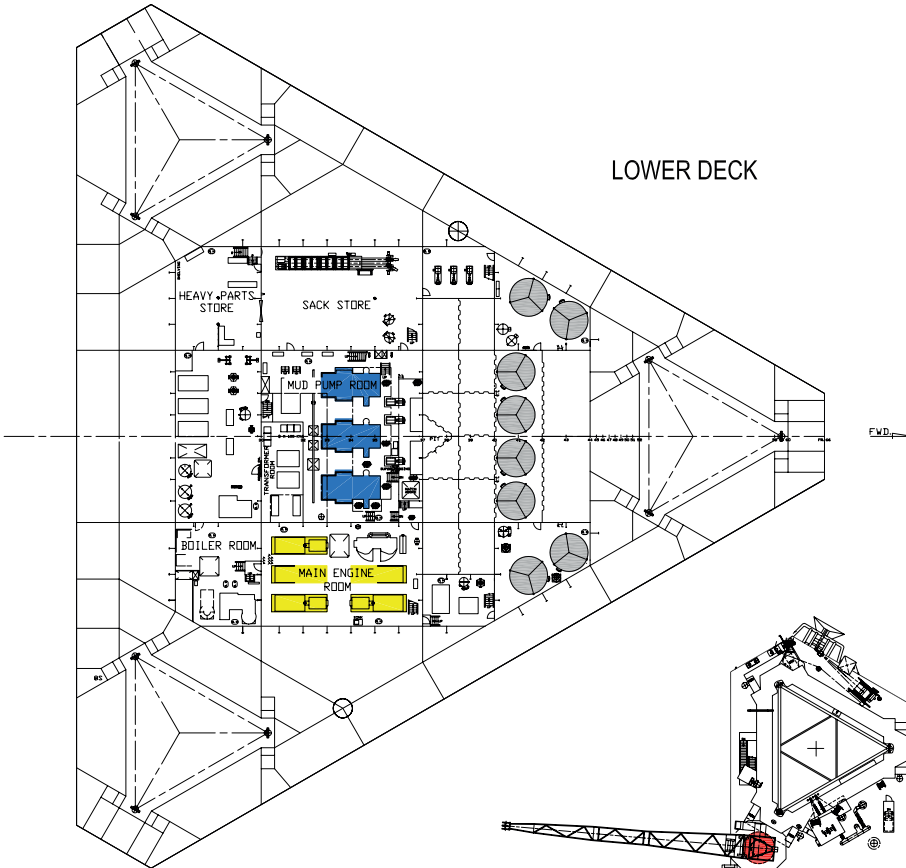


A DECK.

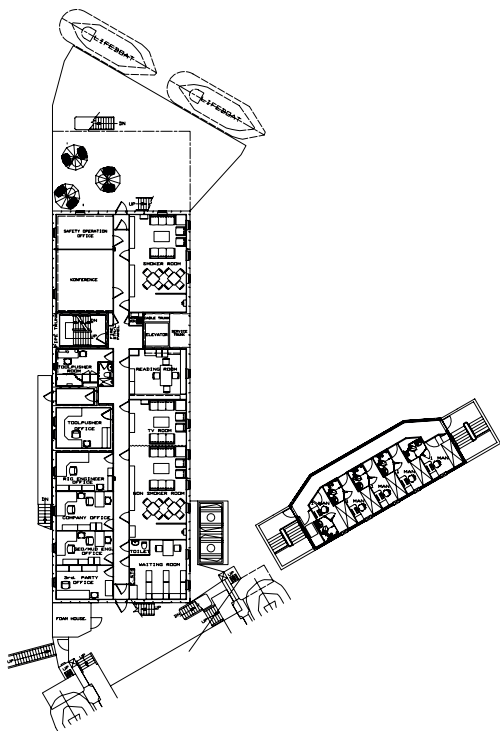
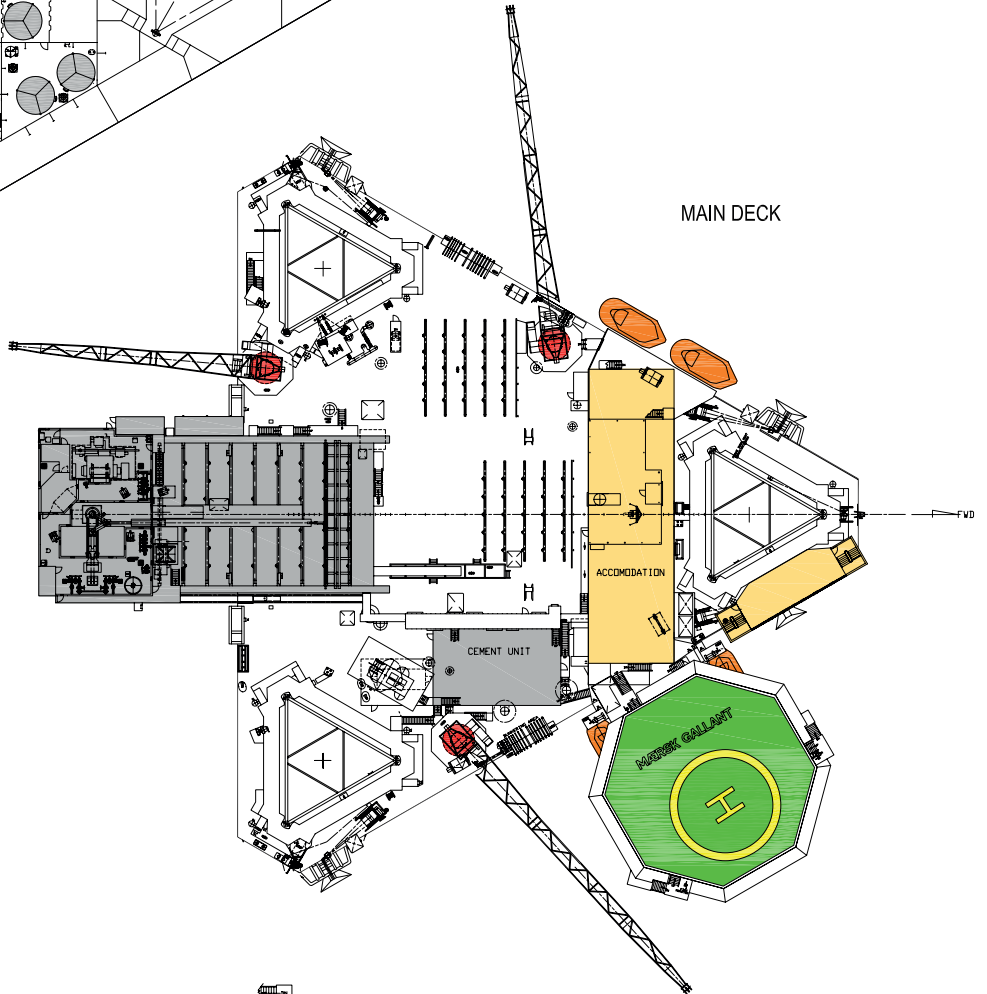


B DECK.

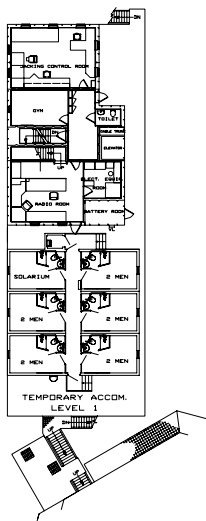
LOWER DECK



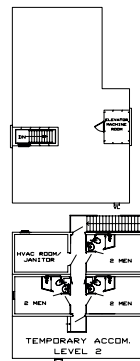
MAIN DECK



C DECK



D DECK



E DECK

Head office:

Maersk Drilling

50, Esplanaden
1098 Copenhagen K
Denmark

Telephone: +45 3363 3363

Telefax: +45 3363 3182

E-mail: copenhagen@maersk-drilling.com

www.maersk-drilling.com



June 2009

Maersk Drilling, Esbjerg

1, Kanalen
P.O. Box 239
6701 Esbjerg
Denmark

Telephone: +45 76 14 77 00

Telefax: +45 76 14 77 32

E-mail: esbjerg@maersk-drilling.com

Maersk Drilling, Baku

9th Floor ISR Plaza Business Center
340 Nizami Street
Baku 370000
Azerbaijan

Telephone: +994 12 4978450

Telefax: +994 12 4978467

E-mail: baku@maersk-drilling.com

Maersk Drilling (UAE) FZE

LB18, 26th floor, Jebel Ali Free Zone
P.O. Box 262476
Dubai

United Arab Emirates

Telephone: +971 4 8865 770

Telefax: +971 4 886 5679

E-mail: dubai@maersk-drilling.com

The Maersk Company Ltd.

Maersk Drilling

Maersk House
Crawpeel Road
Altens Industrial Estate
Aberdeen AB12 3LG
United Kingdom

Telephone: +44 1224 243100

Telefax: +44 1224 243213

E-mail: aberdeen@maersk-drilling.com

Maersk Drilling, Venezuela

Edificio MCVSA
Muelle Terminales Maracaibo
Las Morochas
Estado Zulia
Venezuela

Telephone: +58 265 6 401500

Telefax: +58 265 6 410583

E-mail: venezuela@maersk-drilling.com

Maersk Drilling USA Inc.

2500 City West Boulevard
Suite 1850
Houston
Texas 77042
USA

Telephone: +1 713 346 4300

Telefax: +1 713 783 9409

E-mail: houston@maersk-drilling.com

Maersk Drilling Norge AS

Christian August Thorings veg 9
P.O. Box 134 Forus
4065 Stavanger
Norway

Telephone: +47 52 01 70 00

Telefax: +47 52 01 70 01

E-mail: norway@maersk-drilling.com

Maersk Drilling Australia Pty Ltd

Level 1, 1 Preston Street
Como, WA 6152
Australia

Telephone: +61 8 6436 1400

Telefax: +61 8 6436 1444

E-mail: perth@maersk-drilling.com

Maersk Drilling Services A/S, Brunei

Brunei Branch Lot 7272
Simpang 73, Sungai Duhon
Light Industrial Area
Kuala Belait KA3131

Negara Brunei Darussalam

Telephone: +673 223 9955

Telefax: +673 223 9958

E-mail: brunei@maersk-drilling.com